

THE BUILDING SITE'S BEST FRIENDS



ALL ELECTRIC

100% CO<sub>2</sub> NEUTRAL DURING USE



MOBIVAC .....	4
MANOLAY .....	6
SPUTNIK 600 .....	8
TYPHOON 1000.....	10
DYNAMIC 8000eskrivelse.....	12
BLAZER 2000 .....	14
GLASS 400/600 .....	16
GLASSMOVER.....	18
PLATO .....	20
FLEXMOVER AC 1600.....	22
FLEXMOVER TERRA.....	24
FLEXMOVER 90 G .....	26
TACVAC.....	28
SALES- AND DELIVERY CONDITIONS .....	30





# MANUAL slabs layer

ensures easy handling of porous concrete and Slabs

**MANOLEY** is the perfect vacuum lifter for picking up or laying porous pavement Slabs and curbstones.

Standard with 2 adjustable handles and quick-change couplings the suction cup ensures perfect positioning of Slabs and curbstones.

As **MANOLEY** is connected to a 220V power supply, the powerful vacuum turbine (-0.3 bar) ensures fast and reliable suction (within 0.5 seconds) on even very porous Slabs.

- 1) Individual height adjustable handle enables ergonomic working position, as the handles can be folded, the transport dimensions are very limited
- 2) With the 2 handles, it is easy to lift tiles from high places pallets
- 3) Due to the quick connection, the suction cup can be changed in a few minutes  
– a wide selection of standard suction cups available from stock
- 4) Maximum load up to 140 kg
- 5) Own weight only 18 kg
- 6) Can be lifted with a loading machine such as a backhoe or mini excavators

## Technical data:

- With powerful three-stage vacuum unit and a flow on 132 m<sup>3</sup>/h.
- Lifting capacity (SWL): 140 kg (depends on suction cup size)
- Power 220v
- Ambient temperature: +10 - +40°
- Manual slide valve for loading/unloading
- Vacuum gauge
- Lift eye excl. bracket: ø35 mm
- Own weight excl. suction cup: 18 kg



## THE SLABS LAYER'S BEST FRIEND

Perfect for porous slabs, curbs etc.

MOBIVAC can be delivered driven by Battery, 220 volt electric as well as a petrol generator.





**MOBIVAC** is the perfect vacuum lifter for slightly porous pavement slabs and curbstones due to the extreme vacuum flow.

**MOBIVAC** enables easy and precise handling and laying, but can also be used for removing.

**MOBIVAC** is equipped with coupling for quick change of suction cup, which is suspended so that it can be swiveled by 90 degrees to provide a perfect positioning of the slabs.

**MOBIVAC** is powered from the integrated petrol generator, which supplies the powerful vacuum turbine (-0.30 bar) and ensures fast suction (within 0.5 seconds) on even very porous and leaky slabs.

**MOBIVAC** is equipped with large rubber wheels as standard. With the lever principle and the large grab handle, it makes it possible for one person to lay or pick up slabs, also from a pallet stack.

**MOBIVAC** has an integrated petrol generator which drives the vacuum turbine, and is thus completely independent of power supply.

**MOBIVAC** can also be powered by 220 volt power from the mains.

**MOBIVAC** is delivered with a filter housing and a washable Teflon filter that can withstand dust and moisture.

We stock a large selection of suction cups etc. for various work tasks.  
Here is a small selection.

#### Technical data:

- Lifting capacity (SWL): 140 kg (depends of suction cup size)
- Power supply 110-240v 50-60 hz
- Ambient temperature: +10 - +40°
- Manuel valve for suck/release
- Safety device: Vacuum gauge
- Dimensions (LxWxH): 2300 x 700 x 1300 mm
- Dead weight w/o suction cup: 100 kg
- Vacuum pump capacity 132 m<sup>3</sup>/t





## SLABS LIFTER FOR CRANE SUSPENSION

Strong model for porous Slabs etc.



SPUTNIK can be delivered in a high or low model, driven by Battery, 220 volt electric as well as a petrol generator.





## SPUTNIK,

with its enormous vacuum flow, is perfect for handling porous concrete slabs, steps steel elements etc.

**SPUTNIK** is the perfect vacuum lifter for picking up or laying porous pavement slabs and curbstones.

Strong frame construction for suspension on loaders for use on construction areas.

Standard with quick-change suction cup

**SPUTNIK** powered by 220 volt powerful vacuum unit..

Generator is inclusive, but **SPUTNIK** can also be connected to a 220 volt power supply

A fast and reliable suction (within 0.5 seconds) even on very porous slabs.

**SPUTNIK** is delivered with a washable filter.

### Technical data:

- Lifting capacity (SWL): up to 600 kg (depends on the size of the suction cup)
- Power supply 110-240v 50-60 hz
- Ambient temperature: +10 - +40°
- Manual slide valve for suction/release
- Safety devices: Vacuum gauge
- Lift eye excl. bracket: ø35 mm
- Dimensions low model (LxWxH): 600 x 700 x 800 mm
- Dimensions high model (LxWxH): 650 x 410 x 1120 mm
- Dead weight w/o suction cup: 80 kg
- Vacuum pump capacity 132 m<sup>3</sup>/t

We stock a large selection of suction cups etc. for various work tasks.

Here is a small selection



## PROFESSIONAL LIFTER for slabs and curbstones etc.

BLAZER 2000 can be delivered driven by 400 volt electric, hydraulic or from a built in petrol engine



**BLAZER 2000** can be mounted on fork-based vehicles such as earth mover, trucks or on tractors with forks in the 3-point hitch.

- Light construction with suction hose.
- No resistance in the lifting hose when the suction cup is lowered empty
- Lifting hose is unaffected by dirt in up/down function
- Does not cause unnecessary downtime

The forks are inserted into the fork pockets of the vacuum lifter, locking bolts are inserted behind the fork back and secured, after which the forks can be used to bring a pallet of tiles to the work area.

Very simple to use:

- The tower is adjusted plumb, with the adjustment levers, so that the arms are level.
- Start the engine
- Release the arm lock.
- Ready for use

**BLAZER 2000** significantly reduces handling, which provides good economic benefits compared to manual handling. The large 110 m<sup>3</sup>/h vacuum pump ensures that even very porous tiles with an open cell structure can be handled. Suction cup can be changed quickly with 2 thumb screws.

Optimal logistics:

Suction, lift and place the slaps in one operation.

Easy handling of loads up to 140 kg with the powerful vacuum lifter, which is driven either hydraulically from the vehicle, with a petrol engine, which makes **BLAZER 2000** into an independent unit.

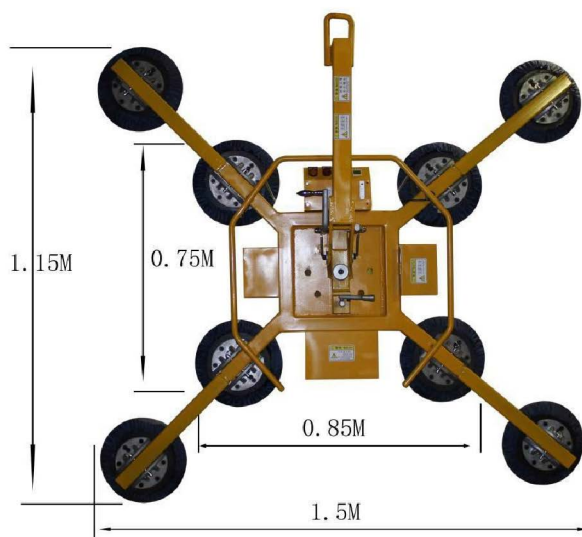
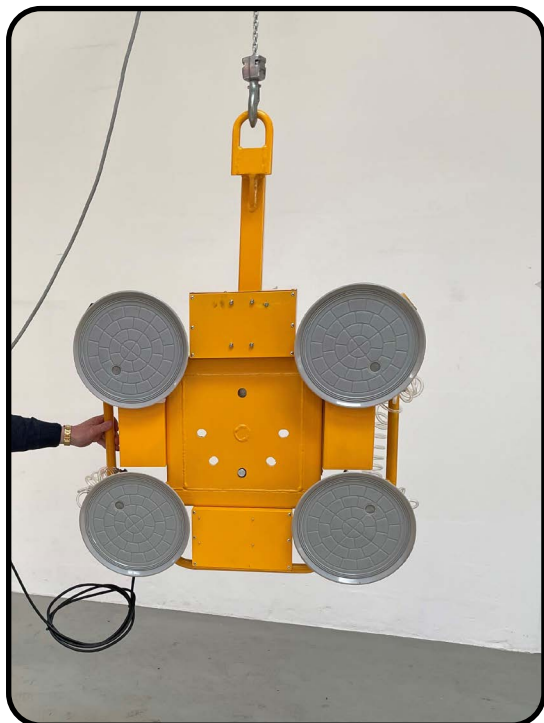
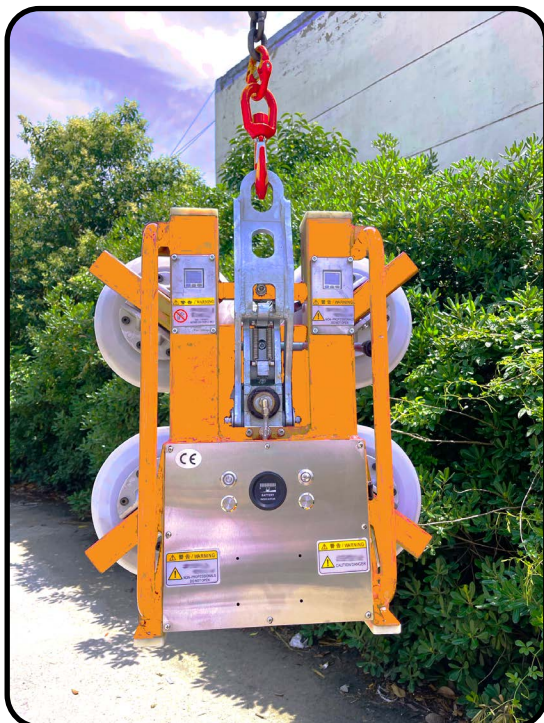
Technical data		
Text	Measuring	Value
Lifting capacity	kg.	160
Lifting height	mm	1140
Alocate height	mm	85
Arm reach	mm	3.000
Working area	grader	360
Working area diameter	mm	6.000
Petrol engine effect	HK /kW	4,8 / 3,6
Diesel engine effect	HK	4,2
Dead weight	kg	350 – 390
Fork length	mm	1.450
Width over all	mm	1.500
Depth over all	mm	450
Height over all	mm	2.700
Vacuum pump capacity	m <sup>3</sup> /t/bar	110/h -0,7
Dimensioner transport (LxBxH)	mm	1.600 x 1.500 x 2620

We stock a large selection of suction cups etc. for various work tasks.  
Here is a small selection.





# GLASS 400/600



## Popular battery powered vacuum glass lifter with two-circuit vacuum system for safe lifting of glass.

**GLASS 400** can be either **X** model or **H** model.

**GLASS 400/600** is a popular vacuum lifter for light and safe handling of glass etc.

**GLASS 400/600** has manual 90° tilt and manual 360° rotation.

**GLASS 400/600** has two independent vacuum circuits, each vacuum circuit with its own tank and non-return valve. Delivered standard with manual slide valve for suction/release of load using two-handed operation.

The DC vacuum pump is powered by built-in high capacity batteries. Vakustat ensures low energy consumption with automatic start/stop of the vacuum pump.

With the included battery charger from 240V ->12V, it can be charged in the evening, alternatively, by purchasing an extra battery, this can be charged while work.

### **Standard with:**

- Acoustic and visual alarm in case of low vacuum
- Vacuum meter for each vacuum circuit
- Battery charger 240v
- Vacuum filter
- Suspension in adjustable hook

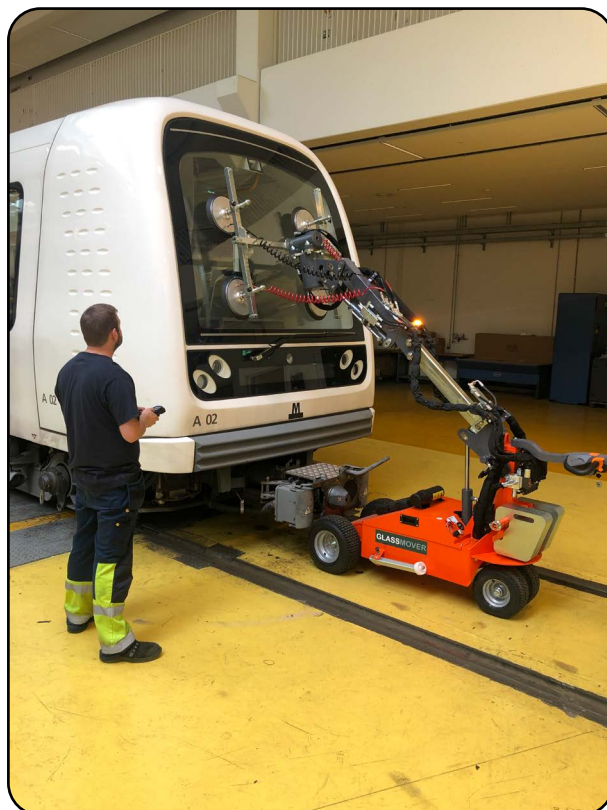
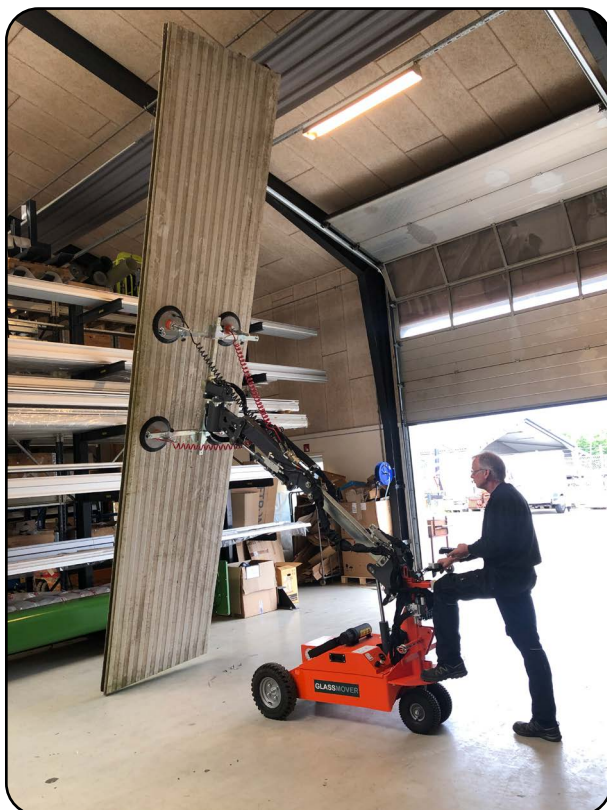
*Do you need other lifting capacity or accessories in the form of remote control, extension arms etc. should you choose one of our other popular vacuum lifters from the GLASS series*



**Professional installation of windows,  
doors, glass, steel, sandwich panels etc.  
also in height, together with Plato.**

**GLASSMOVER is 100% battery driven**

# GLASSMOVER





**GLASSMOVER** is a powerful and flexible Glazing Robot, that can transport and install e.g. window sections. This machine has a 3D manipulator and is supplied as standard with: radio-controlled remote control, 4 pcs. suction cups (glass).

**Supplied as standard with:**

- Radio-controlled remote control
- 4 pcs. suction cups (glass)
- 3D manipulator

**Extra equipment as an add-on:**

- Various suction cups for other materials
- Suction cups for sandwich plates
- PLATO for work at height.

**Excellent for handling:**

- Of large windows by only one person
- With difficult access conditions
- Where cranes cannot reach
- Indoors with small working radius
- Of heavier subjects such as e.g. fire doors
- For loading and unloading from trucks

**Properties:**

1. Lifts the object up to 3 meters in height
2. Is self-propelled in most types of terrain
3. Has hydraulic positioning which gives great flexibility and control
4. Optimal positioning using remote control
5. Has a low center of gravity
6. Transports the item on both sides in narrow passages
7. Can pass through doorways, when mounted from the inside.
8. Built-in telescopic arm
9. 3D head
10. Lifting capacity 500 kg.
11. With a strong 1500 watt driveline that enables driving on construction sites.
12. can work at height, using PLATO (not included).

**The hydraulic 3D head ensures:**

- Turning the boom head to both sides for narrow passages
- Lift from a horizontal position (50 cm below level)
- Turn the subject to +180 degrees to both sides
- Tilting back and forth of the boom head
- Hydraulic side shift
- Extension of telescopic boom: 60 cm
- Lateral offset to both sides of telescopic boom: 20 cm



**Do you need to lift glass in height  
Then PLATO is the perfect solution.**





**PLATO is a platform for lifting GLASSMOVER,  
for work at great heights.**



**PLATO** has fork pockets and can therefore be used with all machines in the construction industry, with pallet forks.

**PLATO** has strong tensioning that ensures the GLASSMOVER's attachment and provides a safe lift.

**PLATO** for GLASSMOVER is a safe choice at all heights.





## PROFESSIONAL ELECTRIC CARRIAGE for moving materials weighing up to 1600 kg.

FLEXMOVER is 100% battery driven





**FLEXMOVER** is an electrically powered carriage, developed especially for transporting of heavy materials in industry and on the construction site

- Standard with powerful electric motor and magnetic brakes
- Large puncture-free foam-filled tires for transport on uneven surfaces such as construction sites
- Built-in battery charger for recharging from 110-240v power supply
- Electrohydraulic scissor lift of platform for stable and comfortable handling of loads and improved ergonomics.
- Ergonomic control handle for control of forward/reverse travel, emergency stop and raising/lowering function
- **FLEX MOVER** Steering on both axles. Is therefore very manoeuvrable, even in narrow areas.
- Delivered ready for use

#### Technical data:

- Driving speed 4-6 km/hour
- Max. load 1500 kg.
- Traction: Start and stop on 6° incline fully loaded
- Motor power: 1500 watts.
- Total shelf dimensions: Width 700 x length 1600 mm Min. tray height 550 mm – max. tray height 710 mm. 150 mm
- Electric hydraulic scissor lift of pallets
- Total length incl. handlebar: 2950 mm
- Tyres: Puncture-free foam-filled tires
- Battery capacity: Up to 5 hours of continuous operation
- Built-in charger 110-240 volts
- Charging time 10-100% 10 hours
- Charging time 10-100% 4 hours as an option
- Dead weight: 350 kg



# FLEXMOVER TERRA

Electric trolley for transporting materials.

100% battery driven





## Electrically driven trolley for transporting plastic running boards and other building materials.



**FLEXMOVER TERRA** for transporting up to 1000 kg. plastic running boards. **FLEXMOVER TERRA** has no raising/lowering function, but is distinguished by having the powerful 1500 watt motor and axle with double bearings.

### Dimensions:

Load platform length 210 cm. total length 325 cm.

Width 80 cm.

Height of bed 55 cm. max. total 170 cm.

### Technical data:

- Standard with powerful electric motor and magnetic brakes
- Large puncture-free foam-filled tires for transport on uneven surfaces such as construction places
- Built-in battery charger for recharging from 230v power supply
- Ergonomic control handle for controlling forward/reverse travel and emergency stop.
- Ready to use

## Electric transport trolley with 90° tilt of the load

100% battery driven



**FLEXMOVER 90 G** is an electrically powered cart developed especially for transport of plasterboard, but can be used for many other building materials such as wooden planks.

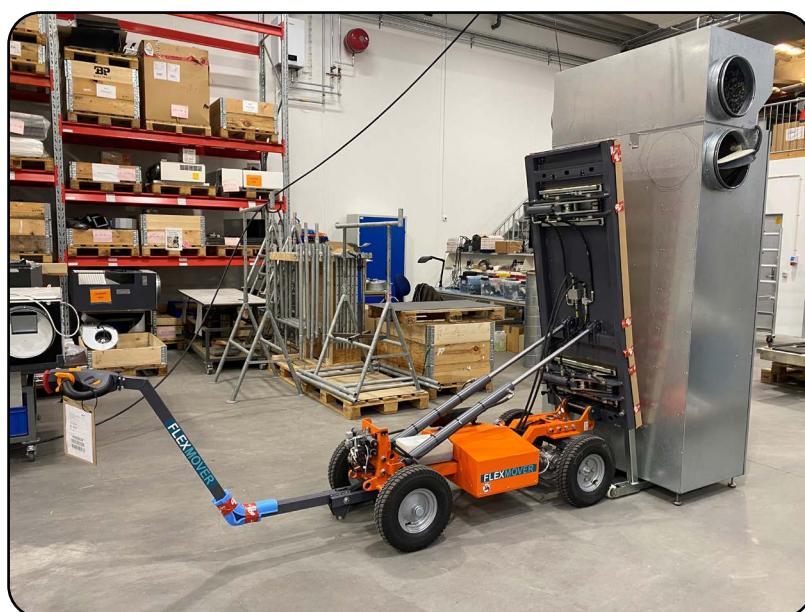
**FLEXMOVER 90 G** can tilt the load, so that the plasterboards stand upright. **FLEXMOVER 90 G** can tilt up to 46 plasterboards.

- Standard with powerful electric motor and magnetic brakes
- Large puncture-free foam-filled tires for transport on uneven surfaces such as construction sites
- Built-in battery charger for recharging from 110-240 power supply
- Ergonomic control handle for controlling forward/reverse travel, emergency stop as well as the tilting function and the built-in lifting plates that make loading with forklift possible.

## Technical data:

- Driving speed 4-6 km/hour
- Max. load 820 kg
- Traction: Start and stop on 6° incline fully loaded
- Sheet dimensions: Width 700 x length 1600 mm
- Tray height 630 mm
- Total length incl. handlebar: 2950 mm
- Tires: Puncture-free foam-filled tires
- Battery capacity: Up to 4 hours of continuous operation
- Built-in battery charger for recharging from 110 -240 volt power supply
- Own weight: 450 kg

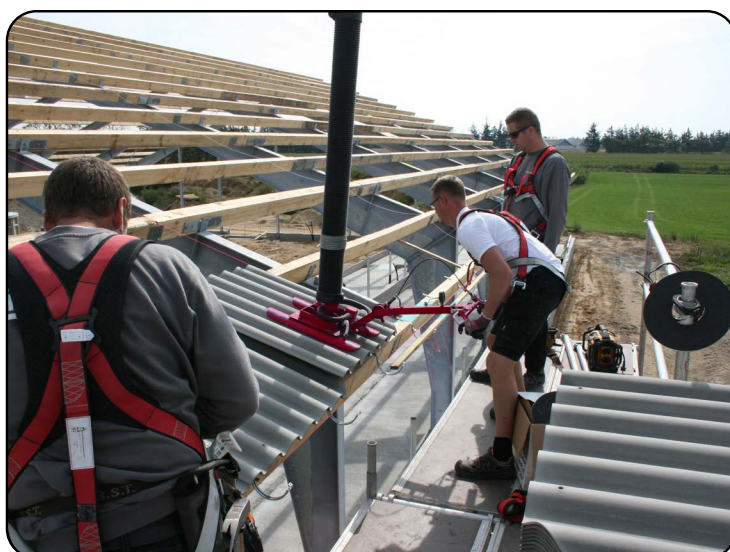
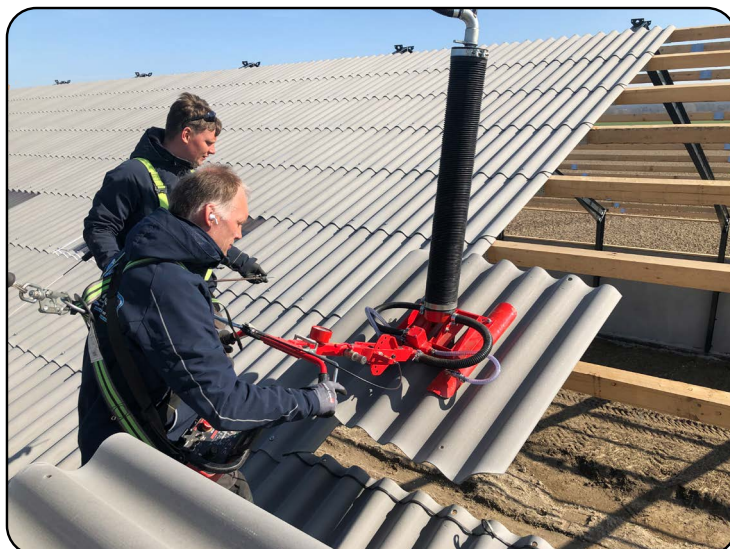
**Works perfectly with Movertrolley and Moverstation**





## PROFESSIONAL LAYING of roof tiles type B5, B6, B7, B9

TAGVAC can be delivered driven by 400 volt electric supply, driven by hydraulic or driven by petrol engine.



**Can now be supplied with HEPA filter**

**TAGVAC** is an assistive device that has been developed in close collaboration with a carpentry company to protect employees' shoulders, knees, fingers and back.

We have developed TAGVAC to meet these stresses.

With TAGVAC, you can typically lay 540 roof tiles per day without feeling burdened. The working area is often 5 roof tiles in a row at a time. Typically, the pallet is emptied before the machine has to be moved again.

#### **TAGVAC:**

- Approx. 70% faster than manual laying
- The pallet with roof sheets is on the pallet fork of the telescopic lift, and is thus with up on the roof
- The flexible (bendable) operating handle ensures ergonomics correct position in all positions
- The suction cups are mounted in a loose suspension system, so they easily adapts to the roof tiles. Fits B6 and B9 roof tiles.
- A manual winch is included for raising the machine's "tower".

#### **Technical data:**

- Supplied as standard for B6, B9 boards
- Suction cups for B5 and B7 can be supplied
- Lifting capacity (SWL): 40 kg
- Total height: 3500 mm
- Total height, transport position (folded) 2000 mm.
- Reach arm:



The following Terms of Sale and Delivery apply to all business relations with AL-LIFT A/S, hereinafter called "AL- LIFT", in-sofar as no written agreement is made to derogate these terms. The Terms of Sale and Delivery apply regardless of whether the equipment delivered is installed by AL-LIFT A/S or by the customer himself.

### 1) Quotation and Delivery

Unless otherwise agreed, all orders shall be noted at the prices applicable on the date of delivery and subject to strike, lock-out and any other circumstance beyond the control of AL-LIFT A/S.

Prices do not include customs duties, VAT or similar public taxes.

Unless otherwise agreed, the delivery times stated are according to our best estimate and subject to reasonable delays. If AL-LIFT A/S becomes aware that an agreed delivery time cannot be met or that a delay will most likely occur, AL-LIFT A/S shall make its best effort to inform the purchaser of this in writing and, to the extent possible, of the time when delivery is expected to take place.

The purchaser shall be entitled to annul the purchase only if AL-LIFT A/S cannot deliver the sold goods at the time agreed or on a later delivery date set in accordance with the above paragraph.

AL-LIFT A/S shall assume no liability for direct or indirect losses suffered by a purchaser due to non-delivery or delivery delays.

### 2) Return

Custom products are non-returnable. For stock goods, a service charge of 20% shall be imposed on return. Goods may be returned only according to prior agreement with AL-LIFT, and return costs shall be borne by the purchaser. Damaged goods cannot be returned.

### 3) Technical data etc. and drawings

Any information contained in brochures, catalogues etc. on weights, dimensions, capacities, performances and other technical data are approximates and shall be binding only if expressly indicated in an agreement between AL-LIFT A/S and the customer.

Technical documents and drawings for use in the production of the goods shall remain the property of the vendor also if entrusted to the purchaser prior or subsequent to the execution of the agreement, and may

not be used by the purchaser without the vendor's consent nor copied, reproduced, handed over or otherwise brought to the attention of any third party.

### 4) Design Alterations

AL-LIFT A/S reserves the right to make any alterations to the design, manufacture etc. which AL-LIFT A/S may deem necessary before delivery and without prior notification of the purchaser.

Such alterations shall not entitle the purchaser to annul the purchase unless the purchaser can produce evidence that the specific design or manufacture formed a precondition of the purchase. Any alterations or annulments of purchase occasioned thereby shall not entitle the purchaser to any kind of damages.

### 5) Transfer of Risk

Unless otherwise agreed, consignments are sold ex factory. However, if AL-LIFT A/S installs the machinery sold, the risk shall be transferred only upon delivery.

### 6) Payment

AL-LIFT A/S's terms of payment are those indicated on the invoice.

If the purchaser does not pay on time, and such delay is not due to any action on AL-LIFT A/S's part, AL-LIFT A/S shall be entitled, as a minimum, to charge a default interest on overdue amounts of 2% per month or part thereof, counted from the due date. Bills of exchange or debt instruments shall not be considered payment until they have been discharged in full.

If the Parties have agreed that payment be made in another currency than DKK, AL-LIFT A/S shall be free to decide if the rate of exchange used shall be that applying on the due date or on the actual payment date. The purchaser shall not be entitled to make any kind of set-off nor to suspend payments in case of defects.

### 7) Ownership

The goods delivered shall remain the property of AL-LIFT A/S until such time as the purchase sum has been settled in full. The purchaser shall not be entitled to resell the goods until they have been paid.

### 8) Remedy of defects

In case of defects in the consignment due to design, materials or workmanship, AL-LIFT A/S undertakes to make replacement deliveries or repair - at AL-LIFT A/S's own option - such defects within a period of twelve consecutive months from the delivery date.

Defects shall not be remedied if they are caused by lack of maintenance, failure to comply with directions for use, incorrect or inappropriate use, more intensive use of the consignment than agreed, alterations or technical tampering done without prior written consent, exceptional climatic exposure, or if they are defects which may be considered a precondition to the conclusion of the agreement.



The remedy right does not apply to wearing parts. Neither does it apply to the costs of installation of dismantling.

If the purchaser wishes to complain of any defect, a written complaint must be presented without undue delay upon discovery of the defect. When AL-LIFT A/S receives a complaint concerning a defect considered to be within the remedy right, AL-LIFT A/S shall remedy the defect without undue delay. The costs of shipping parts and material to AL-LIFT A/S's premises shall be for the purchaser's account and risk.

If the purchaser is able to correct the defect on site, AL-LIFT A/S's remedy obligation shall be limited to shipping the new or repaired part. Shipping of a new or repaired part shall be for the customer's account and risk.

AL-LIFT A/S shall apply the same remedy rights and conditions to replaced or repaired parts of a consignment as those applying to the original consignment. However, AL-LIFT A/S's remedy obligation does not apply to any part of a consignment after a period of eighteen months from its date of delivery to the purchaser, or from delivery by the purchaser to the end user.

Upon transfer of the risk, AL-LIFT A/S assumes no responsibility for defects with the exception of the obligations indicated in this paragraph. AL-LIFT A/S expressly renounces liability for any indirect loss such as lost earnings, downtime, loss of profits etc. that the purchaser may suffer as a result of such defects.

#### 9) Packaging, Freight and Insurance

The prices indicated in quotations and agreements do not include packaging, freight and insurance. Unless otherwise agreed, AL-LIFT A/S shall package and ship the goods in the customer's best interest and for his account.

#### 10) Product Liability

If a consignment from AL-LIFT ApS causes damage, AL-LIFT A/S shall be liable for personal injuries if and only if such damage can be documented to be the result of actions or omissions on the part of AL-LIFT. AL-LIFT A/S assumes no liability for damage to chattels personal or real.

AL-LIFT A/S cannot be held liable for operating losses, loss of profits or any other indirect loss.

If AL-LIFT A/S is ordered to pay damages to third parties, the purchaser shall be under obligation to indemnify AL-LIFT A/S to the extent that such damages exceed the limits stipulated above. The purchaser shall allow legal proceedings to be brought against him before the same court as the one hearing the action brought against AL-LIFT A/S for damages allegedly caused by defects in an AL-LIFT A/S consignment.

#### 11) Acts of God

The following circumstances shall exempt AL-LIFT A/S from liability if occurring after execution of the agreement and preventing its fulfilment:

Labour conflicts, strikes, lock-outs and any other circumstances beyond the control of the Parties, such as fire, war, mobilisation, unforeseen military call-up, acts of sabotage, expropriation, sequestration, exchange control, import or export restrictions, civil unrest, riots, scarcity of operating resources or of goods in general, and fuel restrictions, as well as defects or delays in deliveries from suppliers due to any of the circumstances indicated in this paragraph or any other circumstance beyond the control of AL-LIFT A/S. AL-LIFT A/S shall be entitled to annul the agreement by written notification of the other Party, if the fulfilment thereof within a reasonable time is rendered impossible by any of the aforementioned circumstances.

#### 12) Settlement of Disputes

No disagreement relating to agreements made under the present Terms of Sale and Delivery may be brought before the courts, as any dispute shall be settled by arbitration, the award of which shall be final and binding on the Parties.

The arbitration tribunal shall consist of a total of three members, and proceedings shall take place in accordance with the Danish Arbitration Act (Lov om Voldgift), subject to the following rules:

The Party instigating the arbitration proceedings shall inform the defendant Party by registered letter of his intention to submit a matter to arbitration, of the nature of the matter to be submitted, and of the identity of his appointed arbitrator.

The defendant Party shall within a fortnight upon receipt of such letter inform the submitting Party by registered letter of the identity of the defendant Party's arbitrator. If this deadline is not observed, the defendant Party's arbitrator shall be appointed by the president of the Copenhagen Maritime and Commercial Court.

The arbitrators shall choose a lawyer as umpire and chairman of the arbitration tribunal. If within one week the arbitrators have not agreed on an umpire, the umpire shall also be appointed by the president of the Copenhagen Maritime and Commercial Court. The arbitration tribunal shall determine the detailed rules of its proceedings on the matter, as well as its fee.

The tribunal shall be entitled to decide in its award which Party shall pay the legal costs of arbitration. The legal venue of the arbitration tribunal shall be Lemvig, Denmark.

This arbitration provision shall not preclude the use of prohibitory injunctions. Such injunctions may be sought with no provision of security.

#### 13) Supplementary Rules of Law

Unless otherwise agreed between the Parties in accordance with the above, all transactions shall be subject to Danish law.



### About AL-Lift

AL-Lift was founded more than 35 years ago and is one of Denmark's leading providers of handling and lifting equipment. The company has continuously developed within its product area with a unique range and exports to most of Europe. The company's extensive and long experience means that purchasing lifting equipment from AL-Lift is a secure investment in the future.

In recent times, the company has moved more from direct sales to dealer sales. This results in faster and more efficient service, but AL-Lift's own experts are always available for technical clarification and assistance. AL-Lift has recently become part of a larger group with both electronics and software experience.

### Why buy vacuum lifters?

- Fast and efficient handling of heavy loads
- Better working environment
- Items can be placed tightly and in a limited space, without the use of straps, hooks or other attachment equipment
- Flexible, as most can also be delivered as a mobile solution
- Flexible, different suction pads can be mounted in seconds
- Very large selection of suction pads in stock
- Experience in delivering to specific customer requirements with vacuum lifters
- lifting capacity up to 10,000 kg.

